

**CLAAS**

System expertise  
management plant.







# EASY. Simply more.

The name says it all.

The combined electronic competence of CLAAS can be summed up in a single word: EASY. EASY stands for Efficient Agriculture Systems and it lives up to the name. Equipment settings, steering systems, software solutions and more: Everything becomes quite easy with EASY. Your systems can be matched perfectly with one another, enabling you to get the best performance from your combines and top results for your operation.

Go on. Go easy.

EASY can be broken down into four areas – each providing specialist competence and together making a strong team.

- on board** – Machine control and performance enhancement from the cab
- on field** – Increase productivity out on the field
- on track** – Machine monitoring and remote diagnostics
- on farm** – Software solutions for agricultural operations

## Contents

<b>EASY</b>	<b>2</b>
<b>Soil sampling</b>	<b>4</b>
<b>Graphics</b>	<b>6</b>
<b>Planning</b>	<b>8</b>
<b>Documentation</b>	<b>12</b>
<b>Evaluation</b>	<b>16</b>
<b>Floor-space management</b>	<b>18</b>
<b>Server</b>	<b>20</b>
<b>Service</b>	<b>22</b>

The basis of  
your success.



#### Soil testing.

Soil sampling and soil mapping offer enormous potential for location information and are your basis for thought-out cropping strategies. Major focus is put on targeted soil sampling from carefully selected sampling areas - taking the legal framework into account – as well as the exact GPS documentation. Additionally, ground maps on soil fertility are accessible for everyone and provide strategically important data for site-specific fertilisation and liming. CLAAS Agrosystems supplies you with the comprehensive know-how and integrated software solutions including mapping, crop-cutting records and a GIS system.

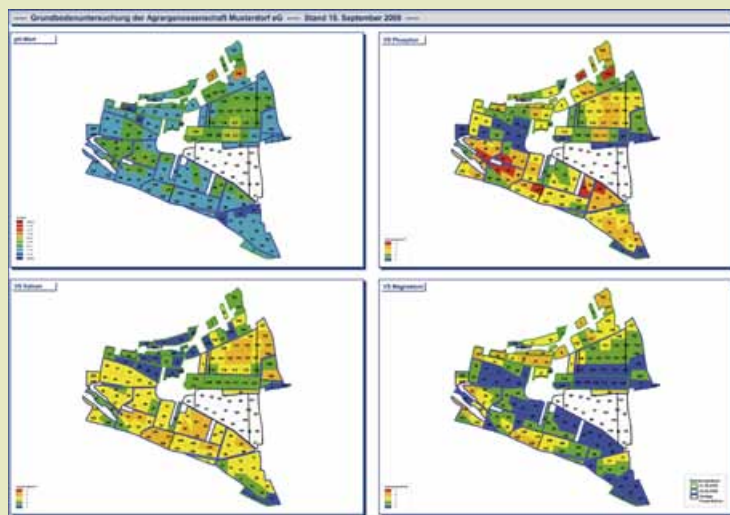


## Meaningful data.

You can choose between different methods of sampling when planning and dividing up sample areas. It is essential to find the right method for your specific farm. Aerial pictures as well as soil and yield maps form a sound base. Our team is there on the field to help and to advise farmers during sampling. All tests are carried out in registered laboratories and results are sent to you - both on paper and in digital form - for your field documentation and crop-cutting record. Our experts are happy to advise you and help you all along the way – from general issues of fertilisation through to site-specific application.

## Primary soil testing.

Primary soil testing is a key component if you want to start site-specific farming. The results can be visualised using the software. The graphics clearly show how nutrients are distributed over the fields: ph-values, phosphorous, potassium, magnesium.



# Work together to achieve meaningful analyses.



It has always been CLAAS Agrosystems' strategy to integrate graphics in plant cultivation software. Not only the crop-cutting record works as a digital operations map but also all existing graphic information can be integrated and further graphic applications can be used by data transfer of AGRO-NET data.

## Keep track – Keep control.

AGRO-NET is a graphic booking platform. You simply select fields from the current operating layer. A map is saved for every entry. In this way it is also clearly documented which area or subplot was treated.

AGRO-NET incorporates graphic planning of surveying and cadastral data like soil samples and profit data. The number of map representations is not limited. You can print all representations from AGRO-NET in exact scale.

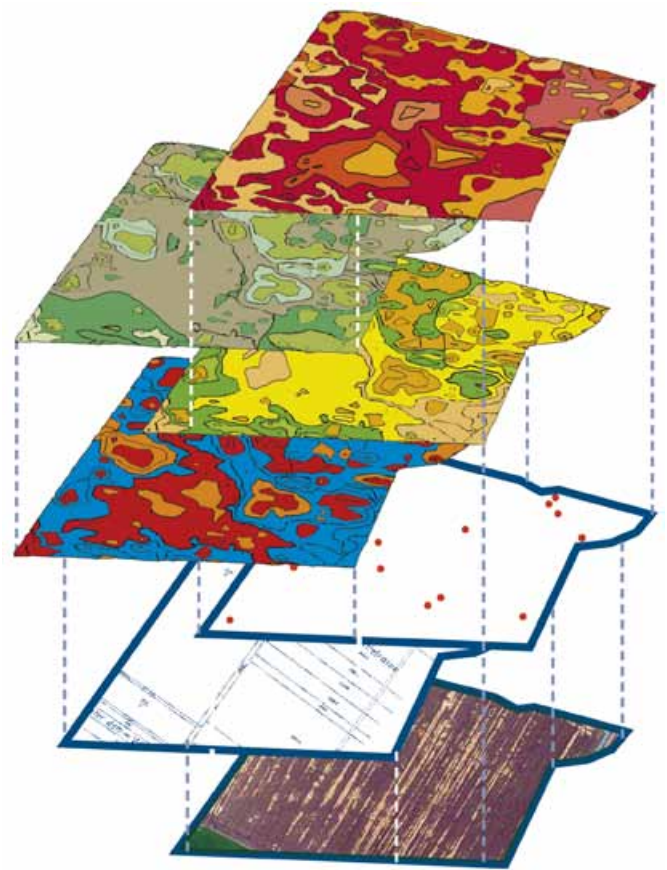
## Valuable functionalities.

The representation of material data in connection with maps delivers additional, valuable information. Connections become visible: For example, it is possible to demonstrate scenery elements or carry out area-related damage assessments after storms. Also EU applications are supported graphically.

## Take the most direct route to achieve your objectives.

Drivers who do not know the way to their fields yet can get directions from Map24 using lot data from AGRO-NET and are able to calculate driving times realistically.





Whether orientation, planning, proof, evaluation or control are concerned – you are able to see pictures instead of working out co-ordinates. You can benefit from it, i.e. in the ground and lease management. AGRO-NET calculates exact results of possible changes from area divisions or consolidation of agricultural land and presents a selection of solutions in graphic form.

### Fly to your fields.

You do not possess aerial pictures of your farm, however, you would, nevertheless, like to get an overview of your surfaces? No problem thanks to Google Earth®: Simply transmit borders from AGRO-NET to Google Earth® and within a few seconds you can enjoy the perfect view of your land. By the way, this also works with profit data from AGRO-NET.

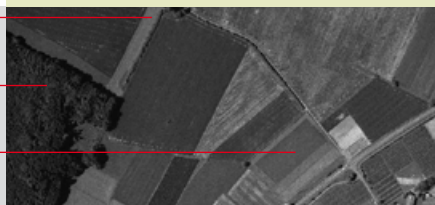
### Security in the event of a damage.

Graphic representations provide valuable services for quick trouble-shooting in case of a damage on your field. Insurances are aware of this fact and demand exact documentation about the affected surface areas. Insurance companies do not accept percentages anymore - as far as multiple risk insurances, as is usual nowadays, are concerned - for financial protection against high water, winter killing, drought damages and frost damages. Whoever localizes the damage in graphical form, can be sure that the case is unwound quickly.

Lanes

Forest

Surface condition



Diagram



In the majority of cases plant production planning focuses on easy cultivation planning today, in other words the selection of crops and areas for a certain period. However – as a general rule - this is not sufficient to do justice to the demands of changed company structures, cultivation procedures or also new lines of business as for example the biogas production.

### Control and plan efficiently.

In order to increase economic and qualitative potentials in this field, resources as well as the selection of crops have to be planned. Who does what and when, using which machines and equipment on which area? AGRO-NET planning goes into great detail in terms of procedures and factors of each single measure and provides far-reaching functionalities:

- Plan all measures with regard to cultures and fields in a clearly laid out manner from sowing and patch preparation up to the harvest, even several crops per year and field.
- Include costs and yields in your cultivation and fertilisation planning.
- Convert planning data into a booking or a new entry with just one click. Planning data is used to generate the current status and no further time-consuming entries are necessary! Also EU applications are supported graphically.

# Cultivation planning: clear and appropriate for your farm.

Every cultivation strategy can be clearly presented and well documented.

Other crop cutting records are coming up against their limits when different crops are recorded on one field during one harvest year. However, AGRO-NET is prepared for this complexity – without "improvisation solutions" for undersowing and catch cropping. If the main crop is harvested, another main crop can also be grown in the crop year and be harvested.

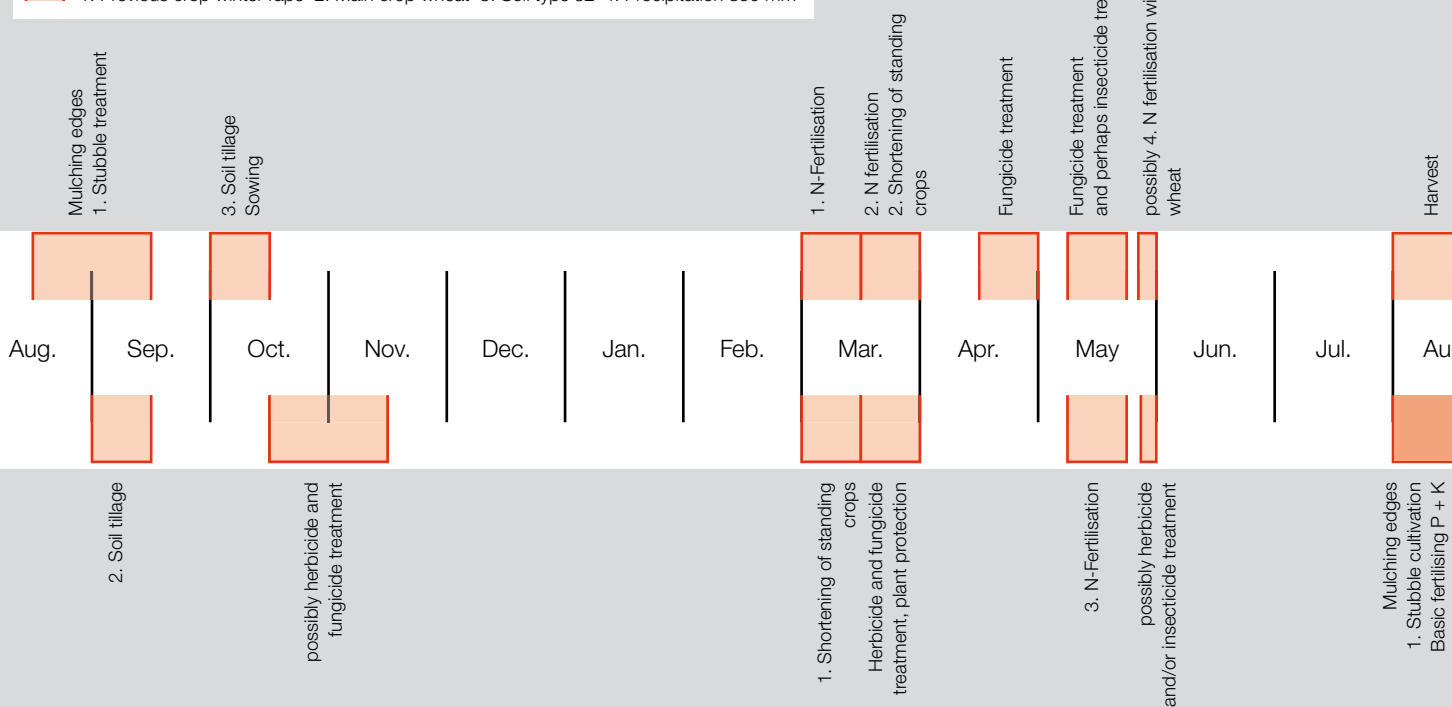


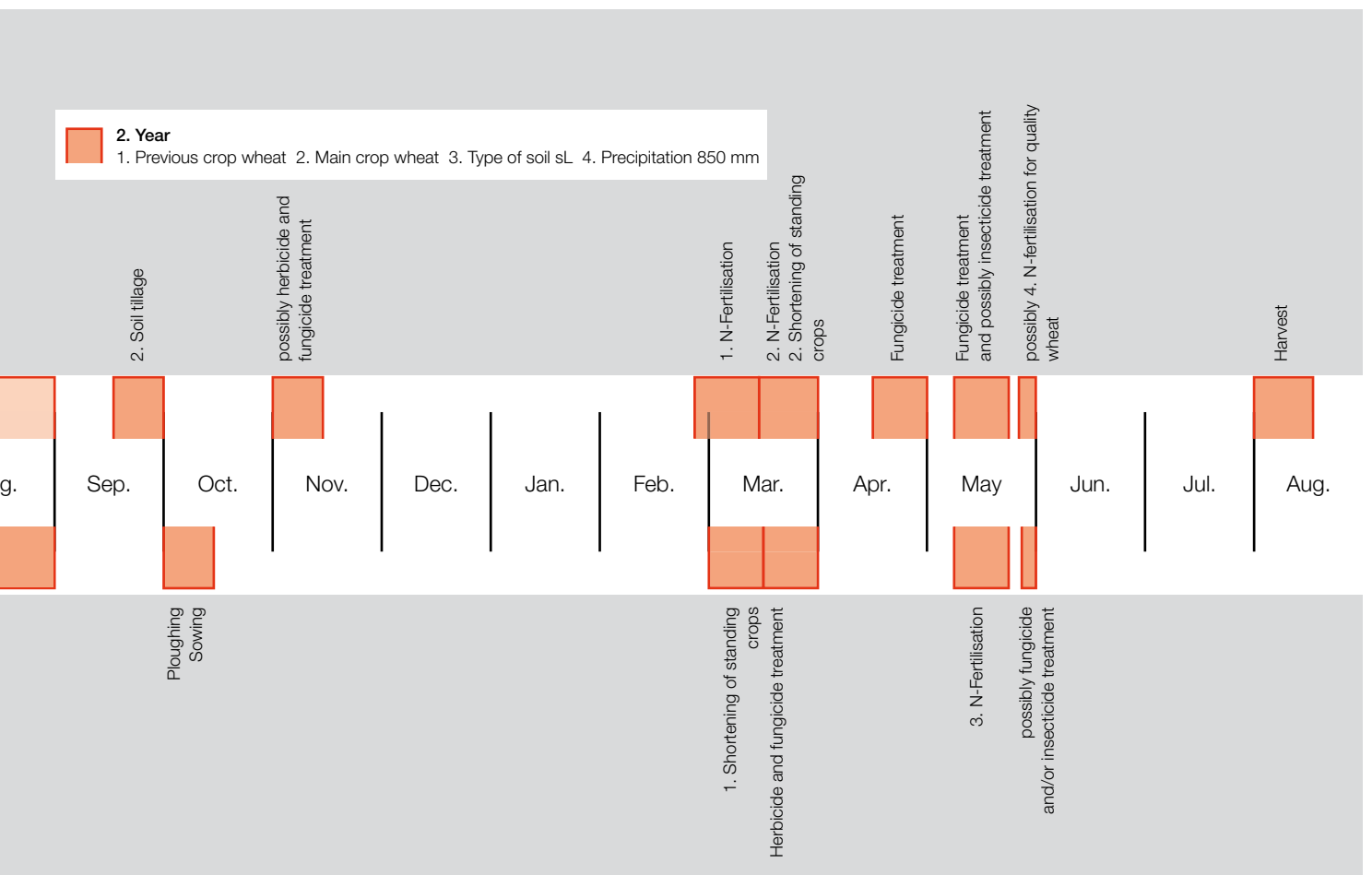
# Well prepared for the next season.



## Extract from crop rotation

1. Year  
 1. Previous crop winter rape 2. Main crop wheat 3. Soil type sL 4. Precipitation 850 mm







## Documentation made easy.

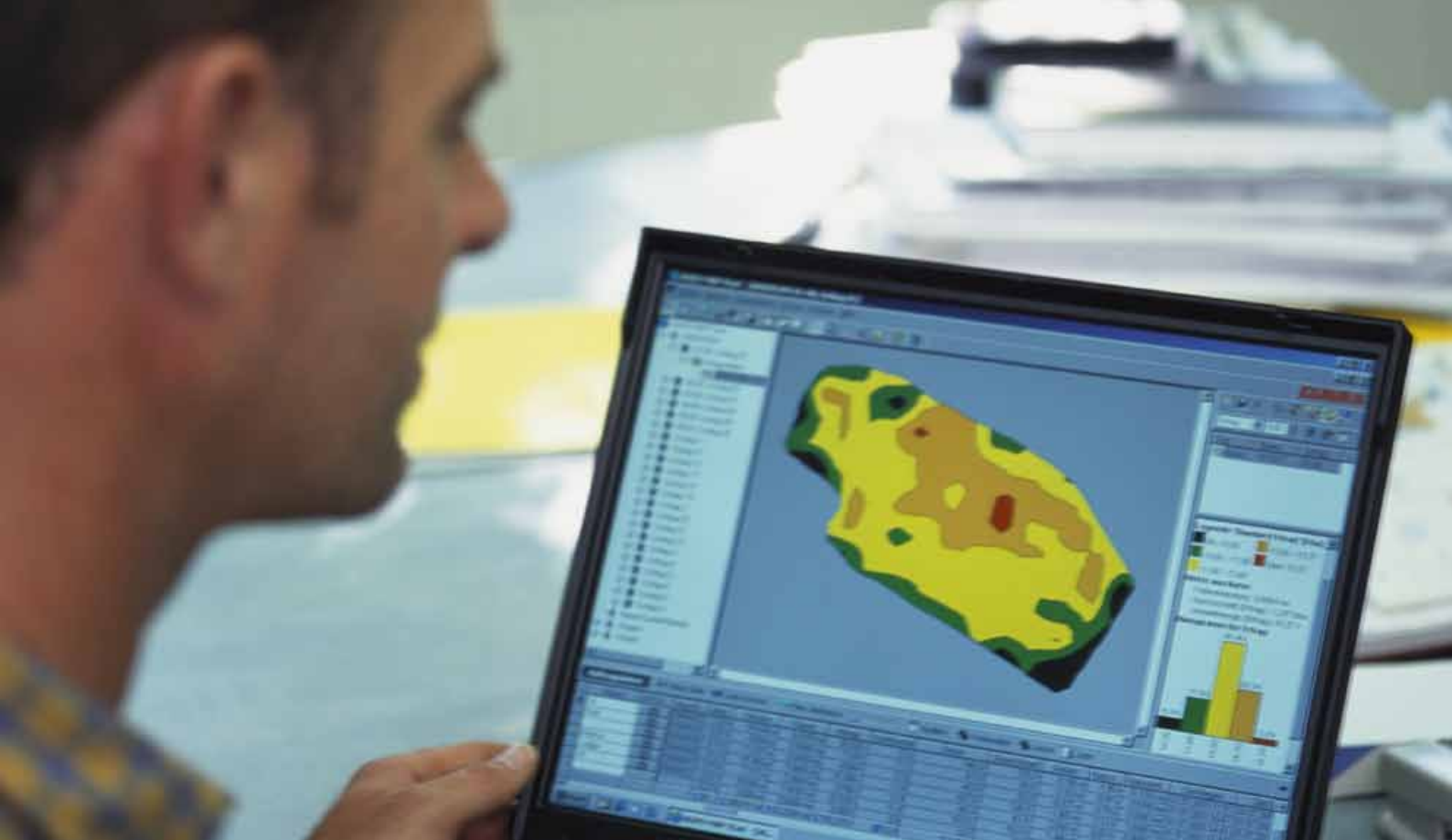
AGRO-NET is designed for every kind of the data input. You can enter individual data or carry out collective entries. AGRO-NET supports different terminal and hand-held interfaces within the scope of the automatic process data recording. This way you remain flexible enough to integrate all lot data and operational data.

AGRO-NET supports interfaces to terminals of the CLAAS group like ACT and CEBIS, but also to other products, like CX/CR or Voyager of New Holland and Uni Control of Müller Electronics. By means of ASD (Automatic Field Specific Documentation System) terminals from Amazone and Rauch are connected. Also the data interchange ISOBUS works smoothly.

### Documentation under control.

Document everything relative to the individual field directly in the appropriate format of the EU application system EUREPGAP or Cross Compliance requirements. Document all storage operations in any number of warehouses subject to validities and monitoring routines. Document all transport processes taking the tied up resources into account, and examine the compliance with environmental provisions for each field. AGRO-NET provides information on official requirements for applications and pronounces recommendations.





## Meet all requirements of the fertiliser ordinance.

This is how a nitrogen balance for a period of three years and a phosphorus balance for six years lose their horror: AGRO-NET supplies the relevant lists so that your documentation obligation can be fulfilled while taking the requested actual yields per annum into consideration.



Documentation



Our standards: graphic documentation.

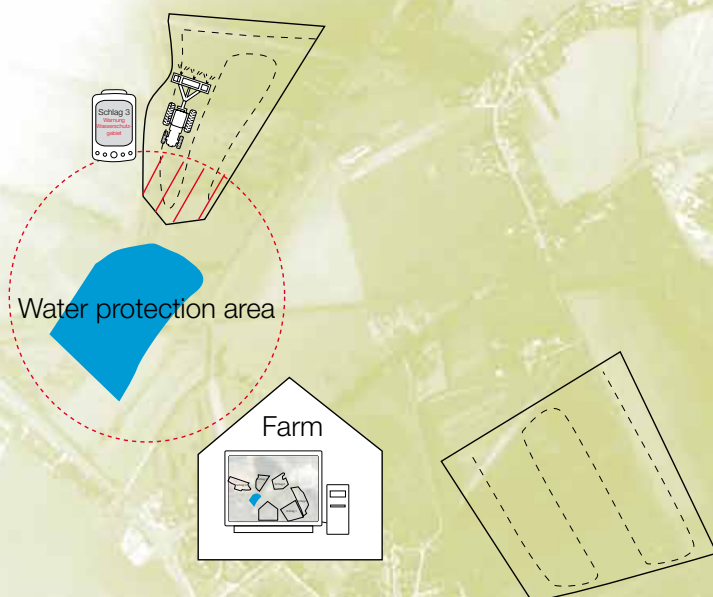
EU applications and InVeKoS (Integrated Administrative and Control System) require a graphic proof of agricultural areas. Not only must the indication of the culture and plots be included, but also a graphic allocation of the field block and the individual field. In AGRO-NET the actual location of the field is precisely defined on the basis of official co-ordinates. Neighbouring fields can be located at a glance. All information given passes strict scrutiny. Even if areas under cultivation should be entered for biogas production, AGRO-NET provides useful documentation functions: Evidence must be submitted for every field to show where each energy source comes from.

Schlagdaten Zuckerrübenproduktion Jahr: 2007	
Aufzeichnung für Ihre Betriebsunterlagen	
Anbauart	ADMOCOM 2
Schlagname	060-01 am Pflugfeld 1
Fruchtfolge	000-002
Ergebnisse der letzten Bodenuntersuchung	14.01.2007
Ansaat	14.04.2007
Termin	13.08.2007
Düngung	13.08.2007

# High-precision mobile documentation with perfect graphics.

## On the move with AGRO-NET mobile edition.

With the AGRO-NET mobile navigation system, farmers can take care of field index management, documentation, area management and surveying, soil sampling and scoring while out on the field. The system recognises the field location automatically, it shows you where the driver is, when the field was entered and when the machine leaves. All activities on the field are recorded including when the driver takes a break or when the machine goes from one field to the next. All kinds of obstacles, weed infestations and strips are displayed and once identified it's a simple task to establish a precise working procedure which documents exactly where inputs can be applied and where not. At the same time you document your compliance to the rules relating to fertiliser application and crop spraying.



### Handheld support:

AGRO-NET supports not only AGRO-NET mobile edition but also data exchange with the operating systems PALM OS® and Windows mobile.



Documentation



Once data has been entered, it is available for all types of considerations. From the review of the year's events with all measures regarding a detailed comparison of different crops up to the optimisation of the cultivation strategy.

### Maximum comfort.

The field index shows you all measures on the field at first glance and supplies the relevant data from application charts to ingredients and nutrients. Also sowing and harvest overviews are possible. For your own and other companies. You determine extent and chronology. Our tip: Deposit your main lists in your "favorites" folder!

### Figures and costs under control.

What is the cost per hectare? What is the cost per decitonne? Profit potentials and cost traps can be uncovered using cost analysis. Full cost accounting makes the economic efficiency of your whole production process clear and indicates the actual costs at product and service level. The AGRO-NET product cost accounting and machine planning takes all factors into account. They can be assigned on demand.

### **Pro environment and legal security.**

With AGRO-NET you are able to draw up a fertility balance record in accordance with current regulations.



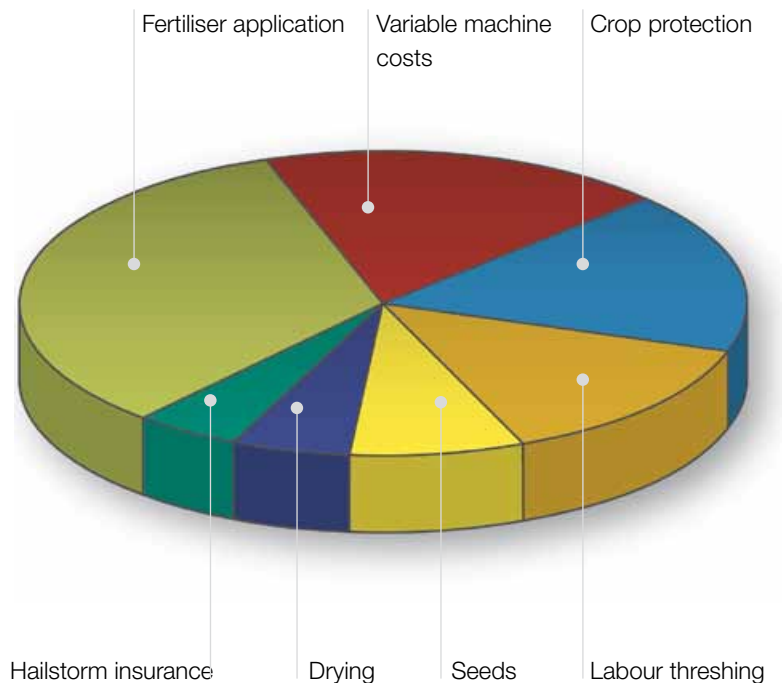
Knowing how  
it pays for itself.

Standard or extras:  
you are given the choice!

AGRO-NET offers you all options to bundle data, to link data, to evaluate data according to different criteria and to display them graphically. In addition, you can customize existing lists by sorting columns, filtering the contents or simply fading out no longer needed columns. No other product in the market offers this extent of an individual operational analysis. All data can be exported into other standard programmes, i.e. Excel, including groups, selections and filters.

Perfect duet: Analysis and graphics.

Graphics are worth a thousand words. Anyone who has ever worked with graphic evaluations, would not like to do without this added value. You can see at a glance which section is particularly lucrative and sources of improvement potentials.



Evaluation



Due to the development of new, partly large-sized, decentralised farm structures a clear lease and barter management is becoming more important. Surface divisions and surface pools are no problem for you!

### Clean solutions.

AGRO-NET presents all the correlated legal and economic data on the areas graphically with exact coordinates. On the basis of full-scale graphics AGRO-NET works out the exact sizes of possible changes and provides several graphical solutions which can be used, for example, also as mandatory dimensions when negotiating contracts. Also the exact calculation of field shoulders works graphically and supplies you with complete and exact data in view of the different environmental measures.

#### Source map

Extract from the geobase data from Lower Saxony measurement and cadastral management: © in 2005



# Manage surfaces and lease graphically.

## Everything interlocks sensibly.

CLAAS Agrosystems has succeeded in linking surface and lease management - as a part of a whole data management - to official applications. Further documentations of plant cultivation are certainly also part of this solution. Therefore, documentation, surfaces and lease payments, premium applications or even a production pass for downstream processing are always from the same data source. In brief: Everything interlinks, everything is logical.

## Direct link to hailstorm insurance.

With regard to insurance matters AGRO-NET also supports efficient and redundancy-free work: Data from AGRO-NET can be transferred directly to the web application of the hail insurance using [agroXML](#).





We want you to succeed. We will be glad to help you. With sustainable software and entirely new solutions that are already setting tomorrow's standards and are a real boon in the daily work of a farmer.

### Work on several farms without going out of your way.

With the cutting edge ASP server technology companies with a wide geographical spread of production or producer organisations are now able to work on a central database. The memory place of the software shifts from several decentralised PCs to only one extremely reliable high-capacity server which can be accessed from any location using the Internet – even across borders. On demand ubiquitous access can be provided to advisers, associations or service providers.

### No expenditure – no familiarization.

You are not using AGRO-NET yet? Then our new services will bring real added value to you: You do not have to instal anything on your PC but you only need access data for the server. You are already an experienced AGRO-NET user? No fear, you and your colleagues do not have to become familiar with anything new. The software remains the same – it is only located in a different place - but works precisely in the same way as known from the installation on your hard drive. With the bonus of an easy, cross-site data

### Central, safe, simple.

For our new, innovative service you use a connection via Internet by DSL, ISDN or GPRS, a PC and a licence. In this way you are granted access to AGRO-NET and work on secure terminal servers.



Well positioned  
for the future.

maintenance. And best of all: You must not worry about software updates any more. CLAAS Agrosystems is taking care of this for you at a central location.

Data whenever and wherever  
you need them.

Your data is safely stored on our high performance servers. Switching to your local farm PC is also easily possible, should the server-supported AGRO-NET not be worthwhile for you anymore. You only have to instal AGRO-NET on site and we will make the complete data available to you. Nothing gets lost, and you continue working smoothly and self-sufficiently.



Server



Today smooth data management is more important than ever. AGRO-NET provides support for efficient inventory management, documentation for the government, customers, suppliers and insurances. It also helps you optimising the whole working process. And since we know that a high work load in the office rests on your shoulders, we are opening new doors to service competence and modern server technologies.

### New technologies to bring about modernisation.

Today farmers have to deal with lot of paperwork. CLAAS Agrosystems is only too happy to ease your workload. The result are well thought-out services. Whether fast growing enterprises or a farmer's cooperative are concerned: where large data volumes converge, users appreciate the highly competitive software and our specific services – from the evaluation of sowing experiments to graphic processing of data up to drawing up profit or application maps.

# Our strong performances are always at your disposal.

## How was the harvest? We will tell you.

Today the use of detailed profit maps is the key to economic success. However, analysis, calculation and production may take rather a long time. A lot needs to be done, observed and linked. Simply pass on your work. You send your raw data to the server – CLAAS Agrosystems takes care of the rest for you. This way you are able to concentrate on other tasks!

## Advice and support for peak performances.

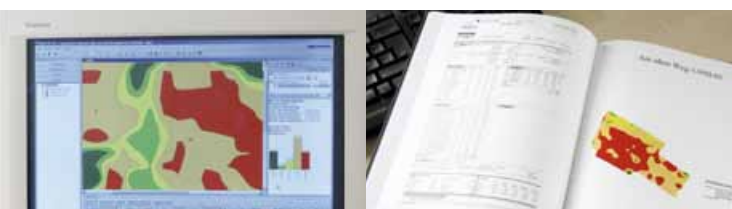
Application maps are a resource that is absolutely essential for working optimisation. Where does everything prosper and grow? Where are fertilizers or plant protection products missing? Accurate maps for precise proportioning optimise the field yield. CLAAS Agrosystems also offers comprehensive service in this area: completion of maps on the basis of your lot, measuring and profit data.

## A degree in perfection.

The necessary as well as helpful documentation of processes, harvest and yield takes up time and produces a lot of tedious paperwork. Folders are quickly becoming thicker and farmers lose track of their core business. Gain an edge and delegate documentation tasks – we will support you. You will receive the relevant documents in pdf-format and a complete back-up of your paperwork will be saved on our server ready for access at any time.

## Neat, your paperwork.

CLAAS Agrosystems offers comprehensive, brand-new services. So why not use all the advantages? If your data is stored on the central server, our IT experts also take over printing and dispatching of maps and documentation. You receive all documents professionally processed and of high print quality.





CLAAS Agrosystems GmbH & Co KG  
Bäckerkamp 19  
33330 Gütersloh  
Deutschland  
Tel. +49(0)5241 3006-0  
claas-agrosystems.com  
701012001111-C/I-KM-GI

CLAAS Agrosystems' sales partners: